

10.01
3:30pm

ANNA DIETZSCH ArC - Arquitetura da Convivência

Anna Dietzsch is an Adjunct Associate Professor at Columbia GSAPP. She is an architect and urban designer, who for the past 20 years has worked between São Paulo and New York, using design to promote interaction. Her portfolio includes the planning and design of significant projects, such as the 9/11 Memorial Museum in New York, the Victor Civita Eco-Park and the Green Stream Linear Park in São Paulo, and the urbanization of the third largest favela in São Paulo, Sao Francisco Global.

She is currently leading research on the urbanisation of the Amazon region and is principal at the design studio ArC - Arquitetura da Convivência. She also leads the Design for Six Feet Initiative with Kaja Kuhl and Liz McEnaney, an urban design laboratory started at the onset of the COVID pandemic. She has taught at City College, Escola da Cidade and NJIT.



10.21

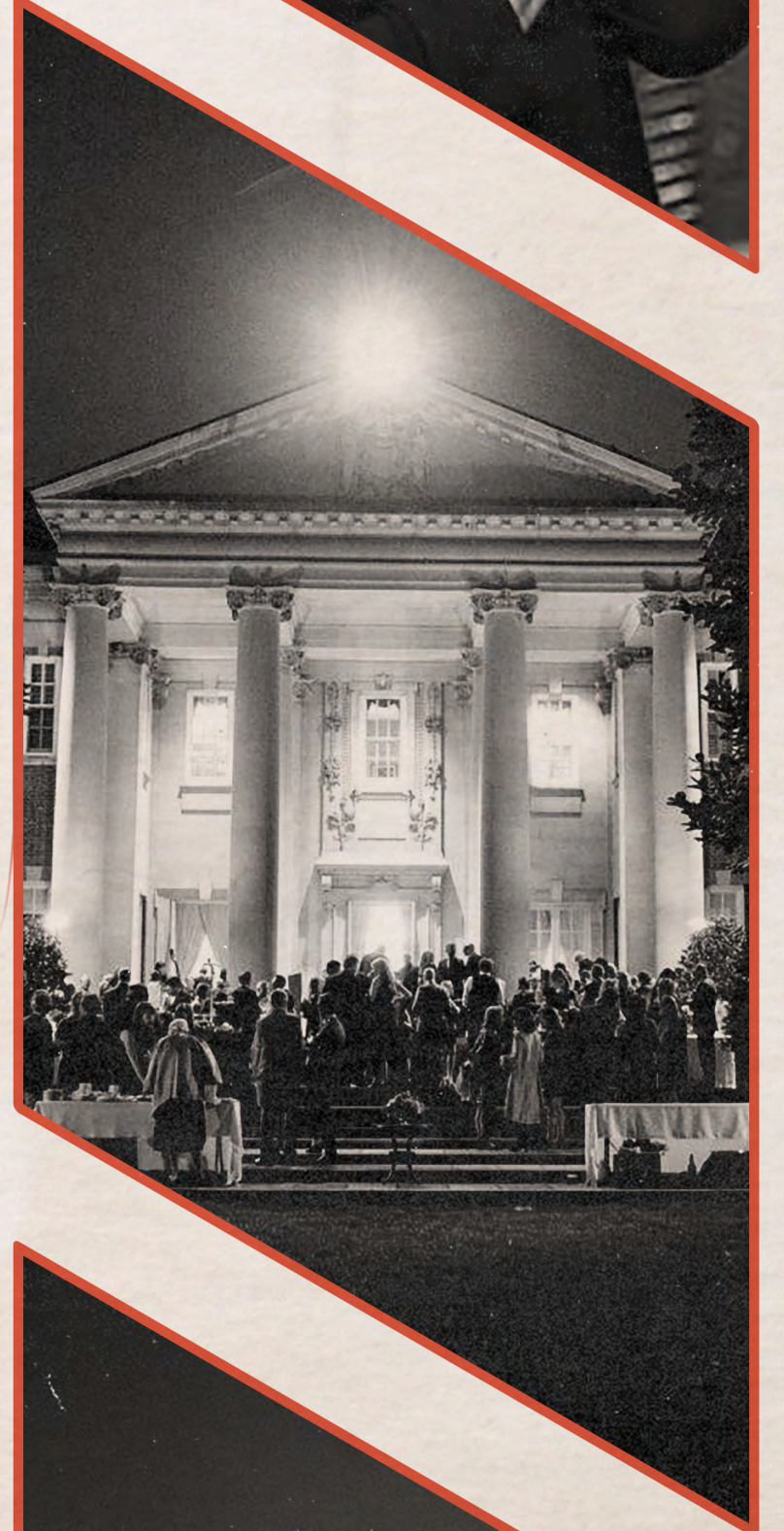
10.22

10.23

PROFESSIONAL HORIZONS Design Leadership Foundation

The Professional Horizons Workshop is an event featuring industry professionals of Architecture, Interior Design, and Landscape Architecture speaking over three days. To find out more about the Design Leadership Foundation, visit designleadershipnetwork.org.

The featured speakers include Thomas Kligerman (Ike, Kligerman, Barkley Architects), David Stocker (SHM Architects), Ron Woodson and Jamie Rummerfield (Woodson & Rummerfield's House of Design), Caren Rideau (The Kitchen Design Group), Liz Cann (Liz Caan & Co.), Rebecca Birdwell (Design Leadership Foundation) and more.

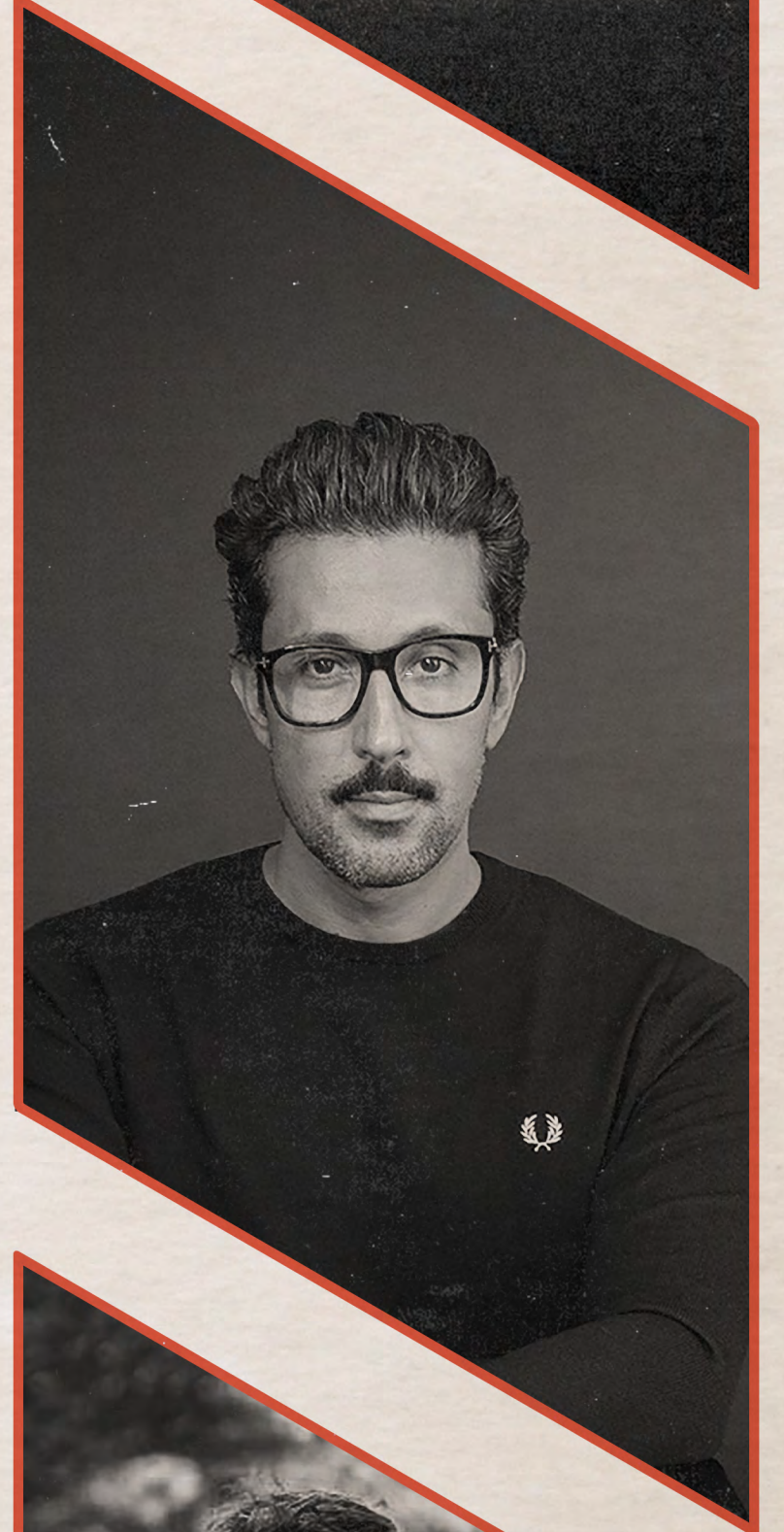


11.05
3:30pm

STÉPHANE MALKA Studio Malka Architecture

Born in Marseilles, Stephane Malka was inspired by urban spaces from a young age. Graffiti, a technique he adopted for over 10 years, lead him to discover the city and its untapped potential. In the late 80's, vacant lots were his playgrounds. He painted large-scale frescos in the contemporary ruins of Belleville and in the infamous artist squats of the "Ateliers Frigorifiques," using various street skills and processes including graffiti, accumulation, collage, and stencils the skin of walls.

Returning to his hometown, he continued to invade the city with his art in numerous places, including art galleries. From this period, he kept a civil insurrection's spirit, and a significant interest in neglected spaces, and a sense of urgency. Stephane graduated with his architectural degree in 2003 and founded his firm on the spot. Then, he started to collaborate with prestigious international firms such as Ateliers Jean Nouvel, Philippe Starck or Rem Koolhaas among others.



11.12
3:30pm

MATTHEW WALLACE & JOHN ANDERSON Lake | Flato & Unabridged Architecture

Matt Wallace is co-leader of Lake | Flato's Eco-Conservation studio, which fulfills his passion for championing projects that encourage environmental stewardship. He believes great architecture is a result of collaboration between talented individuals and embraces his role as part of the firm's hiring team, mentoring new employees and regularly presenting to aspiring architecture students.

John Anderson is a partner at Unabridged Architecture, and a resource for sustainability and green design issues under the Leadership in Energy and Environmental Design (LEED) Green Building Rating System. John was the first LEED-Accredited Professional in the state of Louisiana in 2002. John leads the studio in design to meet the particulars of the climate, which results in a regional modernist architecture.



FALL 2021

HARRISON LECTURES



MISSISSIPPI STATE UNIVERSITY
SCHOOL OF ARCHITECTURE

FOR MORE INFORMATION CONTACT
WWW.CAAD.MSSTATE.EDU/SARC | 662-325-2202

SPONSORED THROUGH THE GENEROUS DONATION BY
FREDA WALLACE HARRISON & DR. ROBERT V.M. HARRISON, FAIA, FCSI