

Product Sheets – SlenderWall

SLENDERWALL®

Architectural Precast/Steel Stud Building Panels

A Complete System, Inside and Out

PRECAST CONCRETE

SlenderWall 2" thick architectural precast panels are only 30 lbs. per square foot, 66% lighter than traditional precast, allowing for lower structural and foundation costs. Precast concrete is available in a vast array of Class "A" finishes, colors and textures. Lighter weight also means larger panels, lower erection costs and faster schedules. More panels per truck load reduces shipping costs.



U.S. Army Legal Services
Fort Belvoir, VA
33,338 sq. ft. erected in just 14 days!
Architect: Perkins & Will

G90 STUD FRAME

Ready for drywall, integrated heavy-duty G90 galvanized steel stud framing equates to fewer on-site trades and faster construction schedules.

THERMAGUARD®

Stainless steel fasteners create a thermal-break/air barrier connection by forming a variable gap between the concrete and steel stud frame, reducing energy costs. The system utilizes both standard headed and refractory fasteners to incorporate flexibility and strength.

2X REINFORCEMENT

Both high-tech fiber and welded-wire reinforcement are used in combination, wind-load tested to 226 mph.

CLOSED CELL FOAM

Optional: Energy Code compliant and NFPA 285 fire-rated, factory-installed closed-cell foam continuous insulation. In addition foam provides primary air and vapor barrier for exterior wall. SlenderWall precast building panels with closed-cell foam insulation have been lab tested to meet 2012 IECC Thermal Requirements from Zone 1 through 8.

Johns Hopkins Hospital
Baltimore, MD
Overcladded with panels utilizing Thin-Brick inserts



The design team strategized on how to address the exterior, and make it completely weather-tight and add sufficient insulation. "It needed to be a lightweight system and it had to match the Johns Hopkins signature brick aesthetic on campus." "The only product we found that met all our criteria was SlenderWall."
Dan McKelvey, Associate Principal & Envelope Expert, Ayers Saint Gros

SECONDNATURE® + CLASS "A" ARCHITECTURAL FINISHES

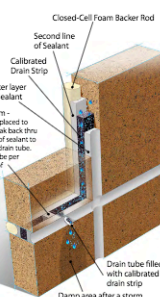
Second Nature™ is the only architectural precast concrete brick reproduction approved by historical societies and architects for use on high profile architectural projects. It looks like hand-laid brick, without the time, labor and leaky mortar joints.

Enjoy a vast array of standard, custom and proprietary Class "A" finishes, colors and textures. Thin brick stone veneers, standard and custom formed patterns are also available. Individual panels can contain multiple architectural details and finishes. To your right is a small sampling of the available finishes. Contact your local producer to obtain product samples.



H2OUT™

Optional: The only pressure-equalized, in-the-joint rainscreen sealant system with street-level leak detection. If the sealant joint ever fails, leaks exit to the outside of the building and can be located within a localized containment area. No water intrusion guaranteed!



FACTORY WINDOWS

Optional: Factory-installed windows provide greater control over the quality of installation. Performed at ground level in a controlled environment, the process improves fit, sealant application, and provides for close-up visual inspection. Factory windows allow for faster erection schedules, fewer on-site trades, and lower overall costs.

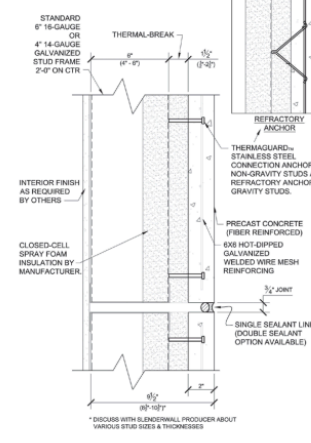
LIFT-AND-RELEASE™

Optional: SlenderWall's exclusive panel-landing system that makes the installation process faster and easier (no need for crane to wait while connections are made).

How It's Made

Proven materials and time-tested manufacturing methods create a durable and efficient composite panel.

1. BUILDING THE FRAMES
2. CREATING THE MOLDS
3. MIXING AND PLACING CONCRETE
4. INTEGRATING THE FRAME
5. INSULATING
6. FINISHING



FACTORY WINDOWS

Optional: The installation of factory installed windows in a controlled environment provides greater control over quality, allowing for better performance, faster erection schedules, fewer on-site trades, and lower project costs.



Achieve The Look You Want

A WIDE VARIETY OF COLORS AND FINISHES



SlenderWall® producers can make panels in any color or texture found within the PCI Color and Texture Guide. Over 24 colors/500 texture options are at your disposal for limitless possibilities.

SAND BLASTING / ACID ETCHING

These are very simple but elegant solutions for finishing concrete surfaces. You can apply them across the entire panel or combine them to create custom patterns.

THIN BRICK SECOND-NATURE™ BRICK

Find dozens of color and texture options using thin brick cast into the precast face. Our exclusive Second-Nature™ brick formliners create a durable and economical hand-laid look.

STAINS/PIGMENTS

Play with color using integral pigments in the concrete mix or surface stains.

REVEALS AND PROJECTIONS

Mimic more expensive traditional materials or create modern schemes.

FORMLINERS

You are limited only by your imagination using formliners to create a cast face finish. Choose from dozens of standard patterns or design your own unique custom look.

In A Variety Of Shapes And Sizes



- CUSTOM DESIGNS
- L-SHAPES
- M-SHAPES
- PUNCH WINDOWS
- RADIUS
- SPANDRELS

Why Use Precast?

Precast concrete has become the architectural cladding material of choice wherever superior aesthetics and construction economy are decisive considerations. Architectural precast combines the benefits of durability, low maintenance, excellent fire resistance and energy efficiency. Manufacturing in certified plants also reduces weather related delays and increases quality control standards.

VERSATILITY

The true beauty of precast is found in the architectural effects that can be achieved. Custom-made forms are used to create panels in the precise sizes and shapes. These forms introduce reveals, joints, patterns, and other detailing to the panel surface. Specific color effects can be achieved by varying sands, aggregates, and pigments. Textures can be customized through the use of differing levels of sandblast and acid etch treatments. Stone, tile or brick veneers can be cast into the panels, giving architects compelling visual effects.

ECONOMICAL & FAST

SlenderWall panels are economical to produce, erect, and maintain. Substantial cost savings can be achieved by taking full advantage of reduced foundation and structural requirements, shortened erection schedules and fewer on-site trades.

TIME TESTED DURABILITY

Concrete has proven through centuries to be the reliable choice for building construction. Low maintenance and resistant to the effects of time, Mother Nature and Human Nature are the hallmarks of this material.

A TRUE VALUE

SlenderWall combines the benefits of high durability, low maintenance, excellent fire resistance and energy efficiency. This creates an ideal solution for high-rise towers, where emphasis is on prestige, luxury, safety and aesthetic appeal, or lower-rise structures, where economy and durability are paramount.

Tested & Certified

Earthquake, hurricane and tornado level testing establishes SlenderWall as the system of choice for severe conditions.

All tests were performed by certified independent testing laboratories using nationally recognized standards and methods. Detailed reports are available upon request.

- ✓ Air Infiltration.....ASTM E283
- ✓ Static Pressure Water Resistance.....ASTM E331
- ✓ Dynamic Pressure Water Resistance.....AAMA 501.1
- ✓ Structural Performance.....ASTM E330
- ✓ Seismic Movement (Interstory).....AAMA 501.4
- ✓ Thermal Cycle.....AAMA 501.5
- ✓ Thermal Transmittance.....AAMA 1503
- ✓ Thermal Performance.....ASTM C1363
- ✓ Sound Transmission.....ASTM E90
- ✓ In-situ Water Test.....AAMA 503.03
- ✓ Fire Resistance Rating.....ASTM E119

Additional Ratings:

- ✓ Wind Load Test: 226MPH, 130PSF
- ✓ Florida Hurricane Code: NOA #09101.05
- ✓ Blast Resistant Design
- ✓ Fire Rated: NFPA 285

More Information

- CALL US TODAY with questions or to initiate a quote - (540) 439-3266.
- Contact us to schedule a Lunch & Learn.
- Visit www.SlenderWall.com for more technical information, project case studies, news, and test reports.
- Register online for access to AutoCAD typical detail files and specifications.

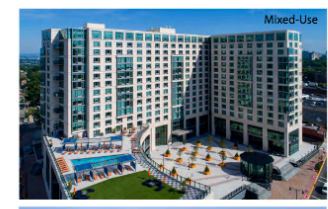


P.O. Box 400, Midland, VA 22728
info@easet.com • 800-547-4045
www.EasiSet.com
SlenderWall® is a product of Easi-Set® Worldwide ©2020

SlenderWall Performs Who Benefits?

SlenderWall is a hi-performance, thermal and fire code compliant, architectural panel system that combines proven technologies into a single efficient solution for new construction, re-cladding or over-cladding.

Healthcare • Hospitality • Institutional Offices • Mixed-Use • Multi-Family • Schools



Developer

— Save money & time upfront
"SlenderWall was the right solution for us."
Lou Haddah, CEO & President, Armada Hoffer

Architect

— Superior Aesthetics & Versatility
"For this project, SlenderWall was cheaper, better and faster to install than alternative construction methods. After all of the options were evaluated, the obvious choice was SlenderWall."
Mr. Doug Carter, AIA, Davis, Carter, Scott

Engineer

— Fully Tested Performance
"Our overall objectives of design flexibility, sound construction, and speed of building erection – all at economical costs – were made possible with the SlenderWall panel system."
Tom LePage, Project Engineer, Barr & Barr

Contractor

— Tighter Erection Schedules
"SlenderWall was chosen for 2 main reasons... it is a continuation of a product that we knew worked well and because of the effectiveness of erection. We had potential tenants and needed to turn around the space quickly."
Stan Link, Senior VP Construction, Corporate Office Properties Trust (COPT)

Owner

— A Product That Lasts
"We went to Virginia to study the panel system for a project in another state, and we were impressed by its capabilities. So we decided to use the system again for the Alexander."
Fred Daibes, Owner, Daibes Enterprises

A Choice Where Everyone Is Rewarded

SlenderWall® is a composite envelope system designed with your primary needs in mind:

- VISUAL IMPACT
- VALUE
- LONGEVITY
- RISK MITIGATION

Who Benefits

- ARCHITECT
- ENGINEER
- SPECIFIER
- CONTRACTOR
- DEVELOPER
- OWNER

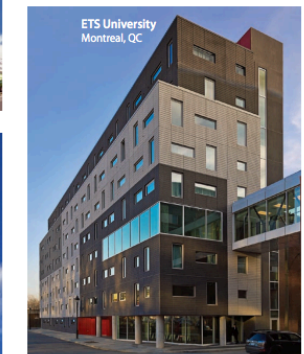
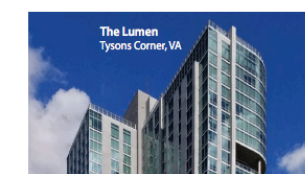
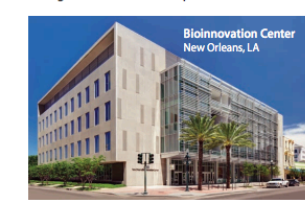
"Minimalistic or as ornate as one wishes"
"Designed & tested to exceed standards"
"Creative, functional & aesthetically pleasing"
"Reduced manufacturing & erection schedules"
"Value driven complete facade system"
"Delivered aesthetics within budgetary goals"



Low-Rise To High-Rise Performance

A single efficient modular product that combines proven technologies for:

- NEW CONSTRUCTION
- RE-CLADDING
- OVER-CLADDING



- HEALTHCARE
- HOSPITALITY
- INSTITUTIONAL
- MIXED-USE
- MULTI-FAMILY
- OFFICES
- SCHOOLS



Pella® 250 Series VINYL



Innovative and enhanced security and privacy features for your customers peace of mind.



AVAILABLE IN THESE WINDOW & PATIO DOOR STYLES:



Special shapes also available.

ENHANCED SECURITY AND PRIVACY

Give your customers more peace of mind with innovative security and privacy features. Double- and single-hung windows are designed with an interlocking checkrail, steel hardware reinforcement and a unique anti-jar sill. Sliding patio doors feature an integrated footbolt, tamper prevention system and blinds-between-the-glass.

STRONGER FRAMES THAN ORDINARY VINYL

Pella's precision welding process creates more durable products that resist warping or twisting over time. Pella 250 Series window frames are 52% stronger than ordinary vinyl.¹

PELLA'S FADE-RESISTANT VINYL FORMULA

Pella 250 Series is made of high-grade vinyl that resists yellowing and never needs painting. The solid color throughout the vinyl keeps minor dings and scratches virtually invisible. Solid-color frames are available in White, Almond and Fossil.

EXCLUSIVE WEATHER PROTECTION SYSTEM

Protect your home with our exclusive weather repel system on single- and double-hung windows. It has three points of protection to channel water away from the home – including triple weatherstripping.

ENERGY STAR® MOST EFFICIENT 2022 WINDOW²

Upgraded triple-pane glass windows are on average 62% more energy efficient than single-pane windows.³ Pella 250 Series offers products that have been awarded the ENERGY STAR Most Efficient Mark in 2022.²

DURABLE EXTERIOR FINISHES

Dual-color frame options offer white interiors with a choice of beautiful DuraColor™ exterior finishes that exceed industry requirements for fade resistance.⁴

FREE-FORM MULLING CAPABILITIES

Create a large or unique combination for your project by mulling standard and custom-sized windows together. Combinations are factory-mulled and arrive ready for installation.⁵

OPTIONAL PERFORMANCE ENHANCEMENTS

Increase energy performance and structural strength with optional performance enhancements such as foam insulation and steel reinforcement.

ADDITIONAL FEATURES AND OPTIONS

We have the features and options that fit most any project. Choose from multiple frame types, dual- and triple-pane glazing, several grille options and a full lineup of window & patio door styles.

LIMITED LIFETIME WARRANTY

Pella products are backed by some of the strongest warranties in the business. See written limited warranty for details, including exceptions and limitations, at pella.com/warranty.

TESTING BEYOND REQUIREMENTS

At Pella, our products are tested beyond requirements to help ensure they have long-lasting performance and reduce call-backs for you.

Product Sheet – Double-Hung Window

PRODUCT SPECIFICATIONS

WINDOW & PATIO DOOR STYLES	MIN. WIDTH	MIN. HEIGHT	MAX. WIDTH	MAX. HEIGHT	PERFORMANCE CLASS & GRADE	PERFORMANCE VALUES			FRAME / INSTALL
						U-FACTOR	SHGC	STC	
AWNING DUAL-PANE VENT	16"	14-1/2"	59-1/2"	43-1/2"	LC35-LC50	0.26-0.30	0.17-0.43	30	Block Frame Integral Fin Fin with J-Channel Flush Flange ⁶ 5/8" Flange Frame
AWNING TRIPLE-PANE VENT	16"	14-1/2"	59-1/2"	43-1/2"	LC35-LC50	0.20-0.25	0.19-0.37	34	
CASEMENT DUAL-PANE VENT	14-1/2"	17-1/2"	35-1/2"	71-1/2"	LC35-LC50	0.26-0.30	0.17-0.43	30-33	
CASEMENT TRIPLE-PANE VENT	14-1/2"	17-1/2"	35-1/2"	71-1/2"	LC35-LC50	0.20-0.25	0.19-0.37	34	
SLIDING WINDOW DUAL-PANE VENT	21-1/2"	11-1/2"	96"	72" West Region 62" East Region	R25-R50	0.27-0.32	0.20-0.51	25	
SLIDING WINDOW TRIPLE-PANE VENT	21-1/2"	11-1/2"	96"	72" West Region 62" East Region	R25-R50	0.20-0.26	0.22-0.44	28	
DOUBLE-HUNG DUAL-PANE VENT	14-1/2"	23-1/2"	53-1/2"	78" West Region 86" East Region	R25-R50 West Region Only	0.27-0.33	0.19-0.49	26	
DOUBLE-HUNG TRIPLE-PANE VENT	14-1/2"	23-1/2"	53-1/2"	78"	R25-R50	0.21-0.27	0.21-0.42	28	
SINGLE-HUNG DUAL-PANE VENT	14-1/2"	23-1/2"	53-1/2"	77-1/2" West Region 96" East Region	R35-R50 West Region Only	0.27-0.33	0.20-0.51	25	
SINGLE-HUNG TRIPLE-PANE VENT	14-1/2"	23-1/2"	53-1/2"	77-1/2"	R35-R50	0.21-0.26	0.22-0.44	28	
FIXED FRAME RECTANGLE DUAL-PANE	11-1/2"	11-1/2"	108" 40 to 8" max.	108" 40 to 8" max.	CW30-CW50	0.26-0.31	0.21-0.58	26	
FIXED FRAME RECTANGLE TRIPLE-PANE	11-1/2"	11-1/2"	108" 40 to 8" max.	108" 40 to 8" max.	CW30-CW50	0.19-0.24	0.24-0.47	27	
SLIDING PATIO DOOR DUAL-PANE, OX or XO ⁷	46-1/2"	70-1/2"	95-1/2"	95-1/2"	LC35-LC50	0.27-0.40	0.19-0.49	26	
SLIDING PATIO DOOR TRIPLE-PANE, OX or XO ⁷	46-1/2"	70-1/2"	95-1/2"	95-1/2"	LC35-LC50	0.22-0.30	0.21-0.42	27	

WINDOW SIZES AVAILABLE IN 1/8" INCREMENTS

Special sizes available. For more information regarding performance, visit www.pella.com. Visit PellaADM.com for specific sizes and glazings tested and for more information regarding frame and installation types.

GLASS & ADDITIONAL ENERGY EFFICIENCY UPGRADES

INSULSHIELD® LOW-E GLASS



ADVANCED LOW-E INSULATING DUAL- OR TRIPLE-PANE GLASS WITH ARGON



NATURALSUN LOW-E INSULATING DUAL- OR TRIPLE-PANE GLASS WITH ARGON



SUNDEFENSE™ LOW-E INSULATING DUAL-PANE GLASS WITH ARGON

ADDITIONAL GLASS OPTIONS



TEMPERED GLASS



TRIPLE PANE



HIGH ALTITUDE LOW-E⁸



OBSCURE LOW-E

FOAM INSULATION OPTIONS

Optional foam-insulated frame and sash are available to increase energy efficiency.

See back cover for disclosures.

COLORS

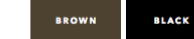
FRAME COLORS

Create a signature look with solid-color and dual-color frames. Dual-color frames allow you to choose a different color for the exterior with a White interior.

SOLID-COLOR:



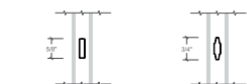
DUAL-COLOR FRAMES:



GRILLES

GRILLES

Grilles are color-matched to your window or patio door interior and exterior frame color.



GRILLES-BETWEEN-THE-GLASS FLAT 5/8"¹⁰

GRILLES-BETWEEN-THE-GLASS CONTOUR 3/4"¹¹

WINDOW HARDWARE

CASEMENT & AWNING

Folds neatly out of the way so it won't interfere with roomside window treatments. Finishes match interior frame colors.



FOLD-AWAY CRANK

COLOR-MATCHED FINISHES:



SLIDING, SINGLE- & DOUBLE-HUNG

Pella's cam-action locks pull the sashes against the weatherstripping for a tighter seal. Optional AutoLock hardware automatically locks the window when it is shut, simply close the sash and confirm it latches.



CAM-ACTION LOCK



AUTOLOCK

COLOR-MATCHED FINISHES:



WINDOW LIMITED OPENING DEVICES

A vent stop can be engaged or disengaged manually and restricts how far the bottom sash of a single- or double-hung window can open. A window opening control device (WOCOD) complies with a safety standard and allows for ventilation, emergency escape and rescue when released. A WOCOD automatically limits the sash opening to less than four inches, unless it is intentionally disengaged, enabling the sash to fully open. Stainless steel limited opening devices are available on casement and awning windows, and WOCODs are available on casement windows.



VENT STOP



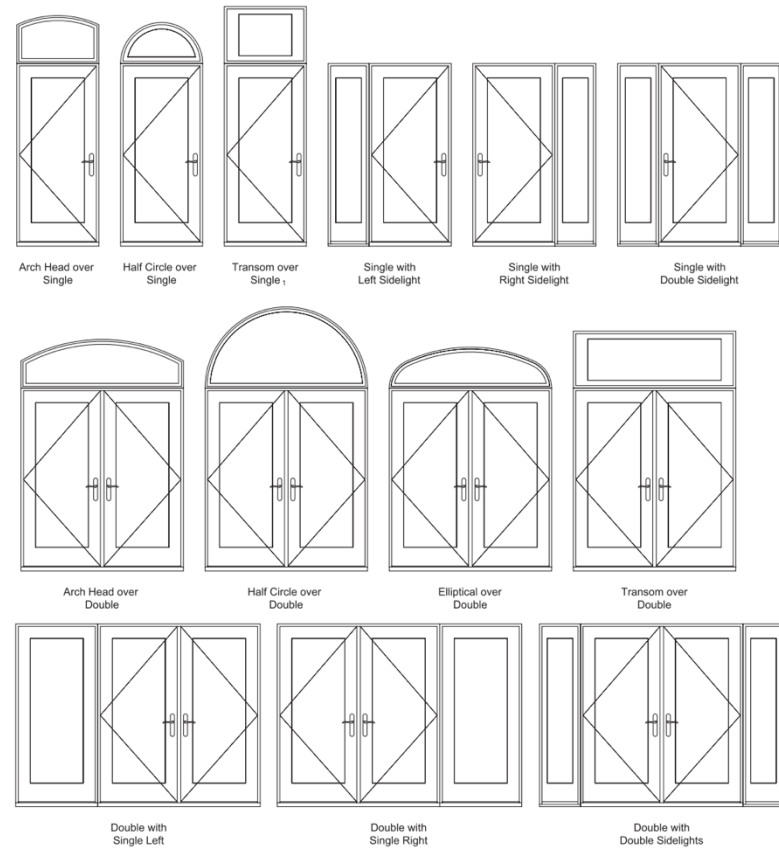
WINDOW OPENING CONTROL DEVICE

COLOR-MATCHED FINISHES:

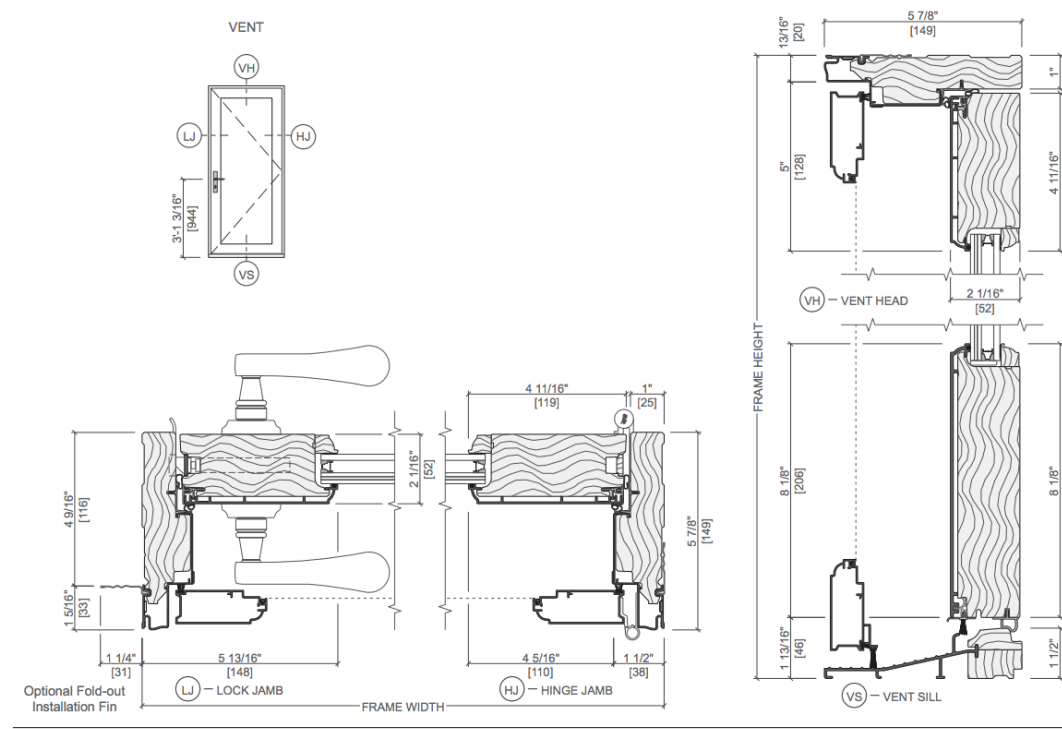


See back cover for disclosures.

Product Sheet – Door



Clad	
7/8" Insulated Glass PVB	
Maximum Performance Grade 1	
Vent units 6' 10" tall and under	+55 / -70
Vent units 8' 0" tall and under	+55 / -70
Vent units over 8' 0" tall up to 10' 0" tall	+40 / -40
Fixed units 6' 10" tall and under	+55 / -70
Fixed units 8' 0" tall and under	+55 / -70
Fixed units over 8' 0" tall up to 10' 0" tall	+55 / -70
Certification	
Miami-Dade County	-
Hallmark	411-H-1164
FPAS	FL14293
TDI	DR-635



(-) = Not applicable.
 (1) Units are tested for air/water/structural and impact-resistance, and certified for wind zone 4, large missile rating D.
 For clear opening, vent area, visible glass, and frame area, see clad Design Data pages.
 To convert areas to square meters (m2), multiply square feet by 0.0929.
 Doors with low profile sills, curved glass in rectangular panel, custom stiles and rails, and no-lock no-bore hardware options are not certified to above standards.

Clad	
7/8" Insulated Glass	
Maximum Performance Grade 1	
Vent units 6' 10" tall and under	+55 / -70
Vent units 8' 0" tall and under	+55 / -70
Vent units over 8' 0" tall up to 10' 0" tall	+40 / -40
Fixed units 6' 10" tall and under	+55 / -70
Fixed units 8' 0" tall and under	+55 / -70
Fixed units over 8' 0" tall up to 10' 0" tall	+55 / -70
Certification	
Miami-Dade County	-
Hallmark	411-H-1164
FPAS	FL14293
TDI	DR-635

7' 2" Single Doors and Sidelight						
	(476) (457)	(664) (645)	(781) (762)	(870) (851)	(933) (914)	(981) (962)
Opening	1' 6 3/4"	2' 2 1/8"	2' 6 3/4"	2' 10 1/4"	3' 0 3/4"	3' 2 5/8"
Frame	1' 6"	2' 1 3/8"	2' 6"	2' 9 1/2"	3' 0"	3' 1 7/8"
	SIDELIGHT 1886	LEFT 2686	LEFT 3086	LEFT 3486	LEFT 3686	LEFT 3886
7' 2" Double-Swing Doors Fixed-Active						
	(1 289) (1 270)	(1 524) (1 505)	(1 702) (1 682)	(1 829) (1 810)	(1 924) (1 905)	
Opening	4' 2 3/4"	5' 0"	5' 7"	6' 0"	6' 3 3/4"	
Frame	4' 2"	4' 11 1/4"	5' 6 1/4"	5' 11 1/4"	6' 3"	
	FIXED-ACTIVE 5086	FIXED-ACTIVE 6086	FIXED-ACTIVE 6786	FIXED-ACTIVE 7286	FIXED-ACTIVE 7586	
7' 2" Double Doors Active-Passive						
	(1 289) (1 270)	(1 524) (1 505)	(1 702) (1 682)	(1 829) (1 810)	(1 924) (1 905)	
Opening	4' 2 3/4"	5' 0"	5' 7"	6' 0"	6' 3 3/4"	
Frame	4' 2"	4' 11 1/4"	5' 6 1/4"	5' 11 1/4"	6' 3"	
	ACTIVE-PASSIVE 5086	ACTIVE-PASSIVE 6086	ACTIVE-PASSIVE 6786	ACTIVE-PASSIVE 7286	ACTIVE-PASSIVE 7586	

Interior Finishes

Interior Wall Color:

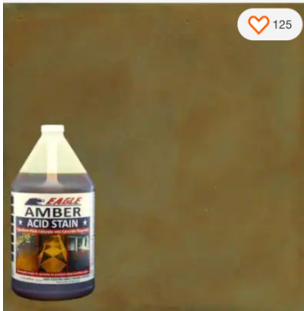

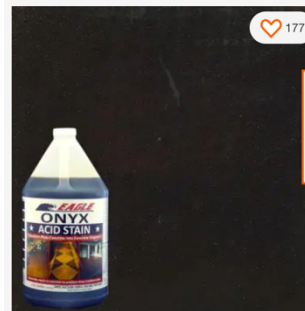

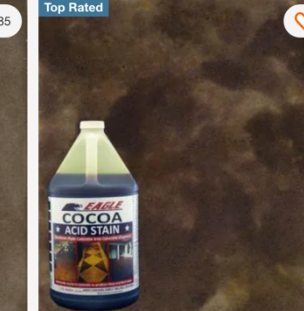
-Alabaster



SW 7008
Alabaster

Interior / Exterior
Locator Number: 255-C2

Interior Concrete Stains:

 <p>Eagle 1 Gal. Amber Concrete Acid Stain Interior/Exterior Stain Model# EDADA ★★★★★ (25) \$59⁹⁷</p>	 <p>Eagle 1 Gal. Copper Interior/Exterior Acid Stain Model# EDADC ★★★★★ (28) \$59⁹⁷</p>	 <p>Eagle 1 Gal. Onyx Interior/Exterior Acid Stain Model# EDADO ★★★★★ (50) \$59⁹⁷</p>	 <p>Eagle 1 Gal. Graphite Interior/Exterior Acid Stain Model# EDADH ★★★★★ (54) \$59⁹⁷</p>	<p>Top Rated</p>  <p>Eagle 1 Gal. Cocoa Interior/Exterior Acid Stain Model# EDACO ★★★★★ (214) \$59⁹⁷</p> <p>More Options</p>
--	--	--	--	---

Interior Lighting:

Shop Harbor Breeze
Harbor Breeze Beach Creek 44-in White LED Indoor Downrod or Flush Mount Ceiling Fan with Light Remote (3-Blade)
Item #1145471 Model #TG44LW3D1RS

EXCLUSIVE

\$114.98 ★★★★★ (1118)

\$109.23 when you choose 5% savings on eligible purchases every day. Learn how

THIS ITEM IS OUT OF STOCK
We'll notify you once this item is back in stock.

Enter Email Address

Notify Me

See In-Stock Lowe's Exclusives

Lighting & Ceiling Fans / Kitchen & Bath Lighting / Island Lights

6-Light Chandeliers, Modern Ceiling Light with Industrial Metal Cage Adjustable Height Hanging Light E12 Base - N/A

★★★★★ (9)

Today **\$178.99**

Color (1): Black

Quantity: 1

Free Shipping! Get an estimated delivery date, Enter Zip Code >

Lighting & Ceiling Fans / Ceiling Lights / Recessed Lighting / Recessed Light Housings

Shop Halo
Halo New Construction IC 6-in Recessed Light Housing
Item #60548 Model #H7ICT

BESTSELLER

\$9.48

- New construction recess easy access to your cells
- Insulation contact (IC) rat insulation
- Wet location approved to

Free Store Pick 111 Available to Aisle 111 Bay 1

Delivery Free with \$45 C Get it by Fri, Ap

Lighting & Ceiling Fans / Kitchen & Bath Lighting / Island Lights

Carbon Loft Sawalha Linear Pendant
Brand: Carbon Loft

★★★★★ (4)

Starts at **\$181.99**

Color (3): Select a Color

Matte Blac... Matte Blac... Matte Blac...

Quantity: 1

Free Shipping! Get an estimated delivery date, Enter Zip Code >

4 interest-free payments of \$45.50 with **klarna**. Learn More

Free Returns* & 5% Cash Back

Countertops:



Appliance Product Sheet



Shop Whirlpool
Whirlpool 3.5-cu ft Top-Load Washer with Deep Water Wash - White (While Supplies Last)
Item #782472 Model #WTW4816FW

Shop the Collection

BESTSELLER
\$569.00 ★★★★★ 1177
~~\$699.00~~ Save \$130.00 Ends Apr 20

Shop Whirlpool
Whirlpool 7.0-cu ft Vented Electric Dryer - White (While Supplies Last)
Item #670009 Model #WED4815EW

Shop the Collection

BESTSELLER
\$569.00 ★★★★★ 15921
~~\$699.00~~ Save \$130.00 Ends Apr 20



U.S. Government Federal law prohibits removal of this label before consumer purchase.

ENERGYGUIDE

Whirlpool Corporation
Models WTW4616F*, WTW4816F*
Capacity (tub volume): 3.5 cubic feet

Compare ONLY to other labels with yellow numbers. Labels with yellow numbers are based on the same test procedures.

Estimated Yearly Energy Cost (when used with an electric water heater)
\$25
Cost range not available

206 kWh Estimated Yearly Electricity Use

\$12 Estimated Yearly Energy Cost (when used with a natural gas water heater)

• Your cost will depend on your utility rates and use.
• Cost range based only on standard capacity models.
• Estimated operating cost based on six wash loads a week and a national average electricity cost of 12 cents per kWh and natural gas cost of \$1.09 per therm.

ftc.gov/energy (PIN W10063066)



U.S. Government Federal law prohibits removal of this label before consumer purchase.

ENERGYGUIDE

Whirlpool Corporation
Model: WRT518SZF*
Capacity: 17.6 Cubic Feet

Compare ONLY to other labels with yellow numbers. Labels with yellow numbers are based on the same test procedures.

Estimated Yearly Energy Cost
\$48
Cost range not available

400 kWh Estimated Yearly Electricity Use

• Your cost will depend on your utility rates and use.
• Cost range based only on models of similar capacity with automatic defrost, top mounted freezer, and without through-the-door-ice service.
• Estimated energy cost based on a national average electricity cost of 12 cents per kWh.

ftc.gov/energy W11033109 Rev.A

Whirlpool
17.6-cu ft Top-Freezer Refrigerator with Optional (sold separately) Compatible EZ Connect Ice Maker...
Item #773091 Model #WRT518SZFM
Save For Later | Remove

\$899.00
Was \$999.00
You Saved \$100.00



Shop GE
GE 1.6-cu ft 1000-Watt Over-the-Range Microwave (Stainless Steel)
Item #520293 Model #JVM3160RFSS

Shop the Collection

BESTSELLER
\$259.00 ★★★★★ 27115
~~\$349.00~~ Save \$90.00 Ends Apr 20



Shop Whirlpool
Whirlpool 30-in 4 Burners 5.1-cu ft Freestanding Gas Range (Stainless Steel)
Item #634744 Model #WFG320M0BS

Shop the Collection

\$649.00 ★★★★★ 3680
~~\$919.00~~ Save \$270.00 Ends Apr 20
PLUS, 1 Rebate Available >

Samples

Butcher Block Sample:



Concrete Stain Samples:



Panel Color Sample:



Acid Concrete Stain Samples:

Acid Concrete Stain Samples:

